

# STAGE MAKE-UP GUIDE:

## You Will Need:

1. Basic makeup brush set
2. Foundation (slightly darker than your complexion)
3. Eyeshadow: (Brown/Bronze/White to Highlight under Brow)
4. Liquid eyeliner (black)
5. Pencil Eyeliner (Black)
6. Mascara (black)
7. Blush (Pink/Red)
8. Lip Liner (red – Not essential but helps – especially as a less smudgy base)
9. Red Lipstick (Not gloss)
10. Clearly labelled Makeup bag or case

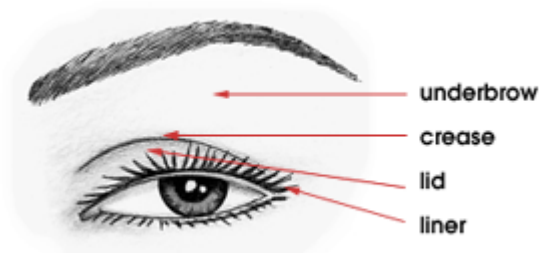


## Step 1: Foundation.

Before you start, we advise applying a little moisturizer to the face to help create a barrier between the foundation & skins. Apply foundation to a clean face. Use the cosmetic wedges/foundation brush to help blend the foundation into the skin if necessary. Be sure to blend a little foundation to the bottom of the chin into the top of the neck so that the foundation looks natural.

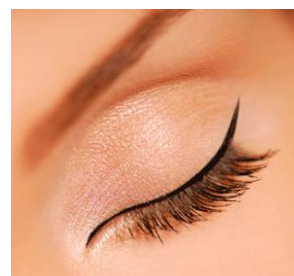
## Step 2: Eyes.

1. Apply bronze eyeshadow all over the lid & just above crease.
2. Blend darker brown into the crease of the eye lid & the outer corner of the eye.
3. Use White/Champagne shadow to highlight from crease to eyebrow.



## Step 3: Eye Liner.

1. Apply a thin line of black liquid eye line as close to the lash line as possible (eye lid only) extending slightly beyond the eye into a slight upward flick.
2. On the lower lash line use your black pencil liner to apply a VERY thin line in the outer corner of the eye (About half way). Be careful not to draw it on thick else it can make the eyes appear smaller on stage.



## Step 4: Mascara

Apply a generous coat of mascara to the upper lashes, focusing on separating the lashes. Apply a less generous coat to the bottom lashes. (Dancers aged 13+ may wear false eye lashes – natural look though please).



## Step 5: Blush

Starting at the middle of the cheekbone, use a big brush to blend the blush back. Using a large blush brush (as opposed to the kind that comes with the blush) will help to blend the blush into the skin and make it look more natural.

## Step 6: Lips.

1. Apply lip liner first. Be sure to stay within the natural lines of the lips.
2. Apply lipstick to the inside of the lips. Colorstay works best because once it is on, it does not come off when a performer sweats, drinks water, or changes her costume (It is next to impossible to get red lipstick out of a light-colored costume). Please use a tissue to blot off any excess lipstick to help prevent transfer onto costume.

